

ENERCON

Plus

**Battery Operated Irrigation Controller
with Set It, Don't Sweat It® Programming**

USER'S MANUAL



Patents # 7,058,478 and 7,266,428 Other patents pending.



Please fully read all instructions prior to installation and use.

All rights reserved 2007 Rev. 4

TABLE OF CONTENTS

Page

Introduction	1
Installation Procedure	1
Existing Installations	1
New Installations	2
Electrical Wiring	4
Existing, and Pre-Existing Field Wiring Schemes	4
Controller	4
Rain Switch	4
Solenoids	4
Operating Characteristics	5
Master/Pump Connections:	5
Enercon Panel Controls and Programming	7
Run/status	7
Time of day & Date	7
Station Assignments	7
Watering Days	8
Setting Water Days	8
Setting Days Interval	8
Watering Duration	8
Start Times	9
Semi-Automatic	9
Manual	9
Rain & Station Delay Times	9
Rain Delay	9
Station Delay	9
Stations Test	10
Budgeting	10
Manual Budgeting	10
Monthly Budgeting	10
Temperature Budgeting	10
Help/Info	11
Rain Switch Enable:	11
Clear Memory:	11
Output Board STNS:	11
Output Board Test (OBT):	12
Minimum Auto Start Temperature	12
Controller On/Off	12
Troubleshooting	13
Battery Replacement	15
Valve Compatibility	15
Optional Features	15
Lightning Suppressor	15
Rain/Temperature Sensor	15
Care & Maintenance	15
Specifications	16
Warranty	Back

INTRODUCTION:

Thank you for purchasing an Alex-Tronix Controller. The Enercon is a commercial battery powered irrigation controller, housed in a stainless steel pedestal, and can operate up to 24 stations with long battery life. Since a solar panel is not required, maintenance and vandalism are minimized, plus the controller can be installed in shade, indoors, or under cover. The Enercon, manufactured in the U.S. by Alex-Tronix, uses technology recognized by the U.S. Department of Energy. The Enercon Plus has been certified for water efficiency under the Smart Water Application Technology "S.W.A.T." program and may qualify for cash rebates by many water districts. **Please check with your local water district to apply for any rebates available.**

INSTALLATION PROCEDURES

MOUNTING PROCEDURE FOR EXISTING INSTALLATIONS:

Please read the steps below to see what tools and materials you will require before beginning installation.

For existing installations that have a concrete pad ready to use, remove old controller and any existing mounting bolts etc. After preparing the area for installation, check if large concrete divots remain after removing. If so, use a fast drying concrete patch such as "pour stone" to tidy things up; let harden. Protrude all wires through existing pad and place the mounting base plate flat on the concrete pad centered the around field wires. Using the provided base plate as a stencil, mark each bolt hole on the cement pad, and remove base plate.

Step 1) Using a star drill punch, and a 5/16" sized masonry drill bit, drill six holes into the pad approximately 2" deep. Remove cement dust out of the holes thoroughly.

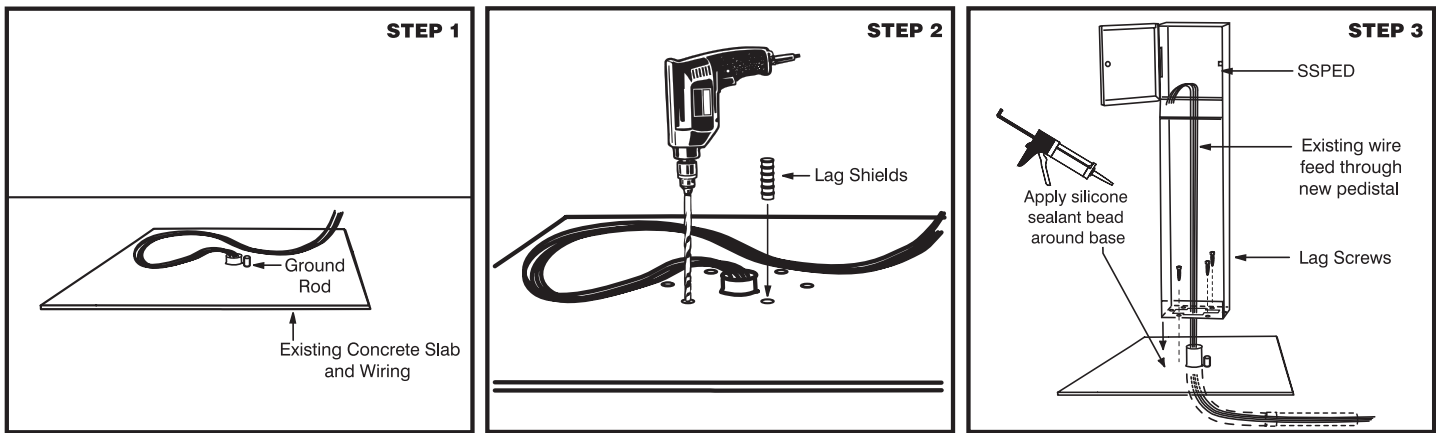
Step 2) Now take 3/8" x 1-3/4" sized, lead concrete anchors ("Lag Shields"--purchased separately) and lightly tap into each hole until flush with surface.

Step 3) Gently lie controller on its back, remove bottom door, and protrude all field wires through the bottom of the pedestal.

Step 4) Stand up controller over the anchors. You will also need six of each: (3/8" x 1-1/2") sized lag screws, and (7/8" dia. x 3/8" hole dia.) -- flat steel washers. SEE FIGURE 1 (next page)

Step 5) With the pedestal standing in place, slip a washer over each lag screw, and insert lag screw into each anchor from the inside of the pedestal. Use a ratcheting socket wrench to securely fasten the pedestal down on to the concrete pad. If there is significant gapping between the pedestal base and the concrete pad, a bead of silicone sealant may be applied around the base of the pedestal. This should be standard practice and will help keep moisture and insects out of the controller.

FIGURE 1



MOUNTING PROCEDURE FOR NEW INSTALLATIONS:

The following cautions should be observed:

- ✓ Do not install the Enercon in a location that will continuously be exposed to sprinkler spray.
- ✓ Do not install the Enercon in a area susceptible to vehicle damage.
- ✓ Do not install the Enercon near underground high voltage or other utility wiring. Check with local agencies for cable and wire locations.
- ✓ Do Electrically "ground" controller using a grounding rod in areas susceptible to lightning and static damage. The factory installed lightning protection option (LP) is recommended in those areas.
- ✓ Do not allow dirt, water, etc. to enter the controller. Keep controller doors locked.
- ✓ Do not spray any cleaners/lubricants into controller.

Step 1) After selecting a location for the controller, excavate an area in the soil with the dimensions of 3' X 2' X 1' deep. Depending on the number of wires, place two 1-1/2" or one 2" diameter, long sweep ell pipe(s) centered in the hole with about a two foot extension laying in the trench. Ensure pipe(s) are vertical with a 4 inch clearance above ground level. If you have an Enercon Plus, and will be installing the Alex-Tronix RTS or RTSP (Rain Temperature Sensor Pole mount), now is the time to make additional room for the underground conduit. Review the installation sheet that came with the sensor for additional information.

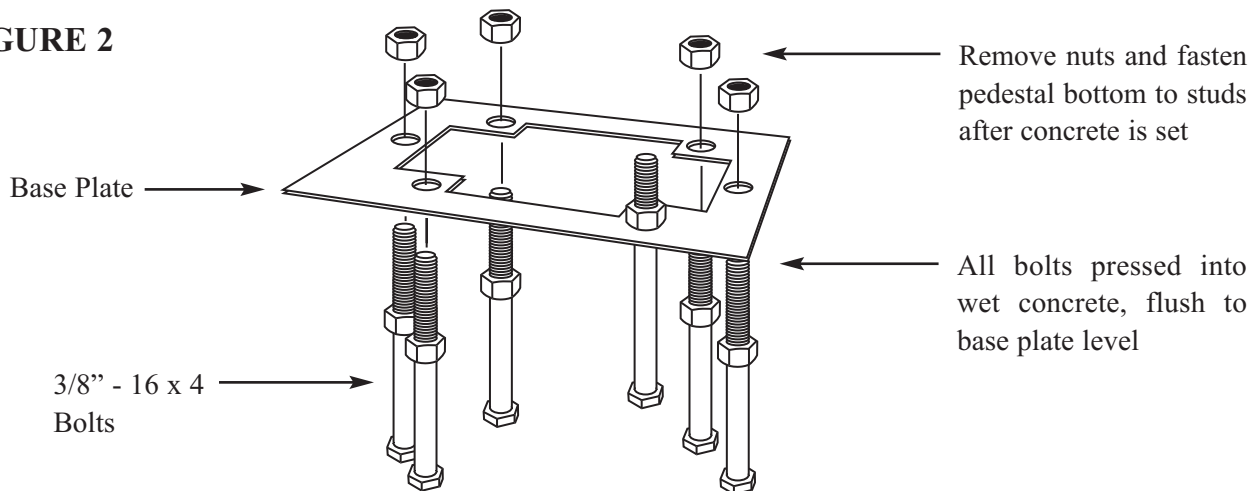
Step 2) Though the Enercon is electrically isolated from power utility providers, it is recommended (but not required) that a grounding rod be installed to help reduce static electricity charge build up and lightning strike damage. If your area is prone to this, then a grounding rod should be installed under or near the pad and at least a 10 AWG wire brought up through the pedestal a few feet; it must be connected to the green ground wire. If you ordered the Enercon with the lightning arrestor gas tube option, you must use a ground rod for adequate lightning protection.

Step 3) Finally, back fill the hole with soil to a depth of about 5 inches leaving the pipe extension open in the trench.

Step 4) Using 2 X 6 studs, build a wood form to the dimensions of 3' X 2'. Rough in the wood form flush to the ground, and check with level. The form should be slightly above sod level so water does not collect on pad.

Step 5) Prepare base plate by taking all six (3/8"-16 x 4 hex) bolts and threading a 3/8" nut on each one until the nut stops against the unthreaded part of the bolt. After this is done, insert all the bolts through the base plate holes from one side and fasten using a second nut for each bolt. The base plate with anchor bolts are now ready to be pressed into the wet concrete form. SEE FIGURE 2 (next page)

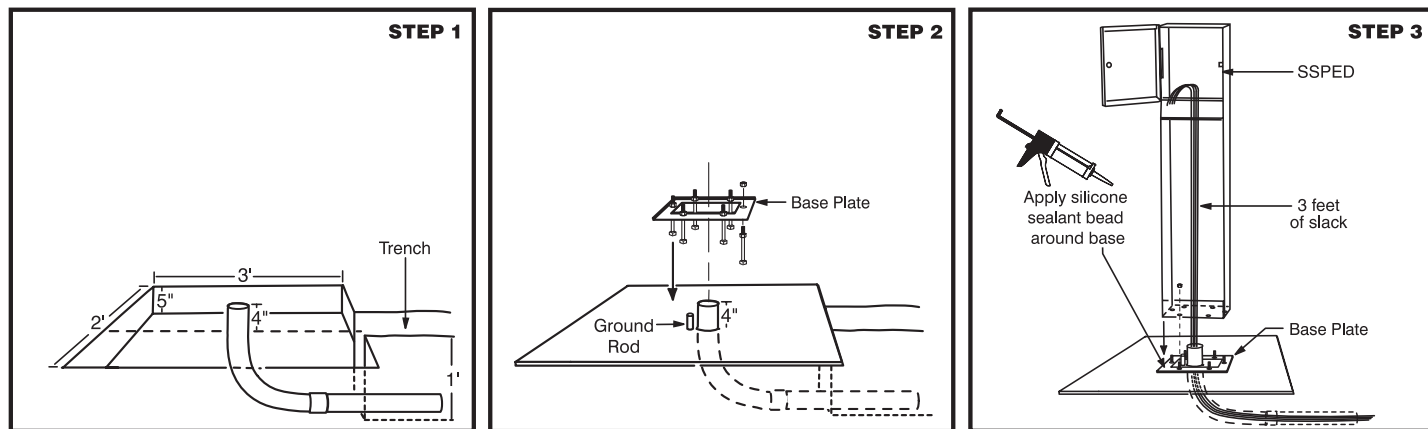
FIGURE 2



Step 6) Prepare fast setting concrete and pour into form, around conduit(s). Immediately trowel and insert base plate with bolts (bolt heads into concrete) and collar around conduit(s). The bracket should "float" on the concrete surface. Verify no tilt by using a level. Allow concrete to set-- typically 1 hour. Troweling should be done in a manner to allow collected water to tread off from pad.

Step 7) After concrete pad has dried, remove exposed nuts from bracket. Gently Lie controller on its back, remove bottom door, and protrude all field wires through the bottom of the pedestal. Stand up controller and place over the exposed studs -SEE FIGURE 3. Put washers on all the studs inside the pedestal chassis, then fasten down with included 3/8" sized nuts. Tighten all nuts down using a ratcheting socket wrench.

FIGURE 3



ELECTRICAL WIRING:

NOTE: Please observe all building codes mandated by your locality.

Existing, and Pre-Existing Field Wiring Schemes.

Before installing the Enercon controller, you will need to evaluate the wiring plan. If the system was previously a DC latching system, connect the field common wire(s) to any of the Enercon's common "C" terminals. The majority of latching solenoids manufactured denote (+ or Red) wire connected to station terminals, and black (- or NEG) wire connected to the common terminal(s). If you are retrofitting an existing AC system with the Enercon, the same field wiring used for AC may be used with the Enercon, *providing wiring polarity is correct*. It is imperative that all the "common" wires are truly common. This may become a problem if a common wire ties into a junction box somewhere out in the field and was incorrectly crossed within the junction box, which still allows an AC system to work, *but may now have to be corrected for a DC system*. Typically, a white wire is used as a common in AC systems.

A good way to verify polarities once the Enercon is installed, is to run the **STATIONS TEST** function and observe performance. If a few valves operate erratically, or turn on when they should turn off, check connections and polarity.

For new wiring, always use a separate colored wire for the common (typically black). It is also good practice to color code station wires or at the least, mark them. This will allow you to trace wires for easier troubleshooting.

Controller:

If valve number field wires were previously not marked, they should be at this point. Wire marking kits are available at electrical supply retailers. If field wires are from an existing system, they should be inspected and re-stripped. **Good clean connections to the terminal strip are crucial**. For new installations, use 14 AWG UF (direct burial) SOLID CORE WIRE. **DO NOT USE WIRE SMALLER THAN THIS**.

Five commons are available for use. Start with station 1 and continue down the rest -- up to 24. Bend all wires at left angles and strip all wires approximately 3/8". Good clean wire routing is important for ease of troubleshooting. Connect all commons ("C") *after individual stations are wired*. If a ground rod was installed, connect wire to the green ground wire "pigtail" located at the bottom of the output board. If installing the Alex-Tronix RSP/RTSP/TSB sensor, follow wiring instructions in the installation sheet

NOTE: All commons marked "C" on output board's terminal strip are electrically wired together on the output board itself. Using all "C" terminals is not necessary. Additional "C" terminals are provided for convenience and ease of wiring.

Rain Switch:

If you are using a rain switch, other than the Alex-Tronix RSP/RTSP, (TSB) mount according to the manufacturers instructions. Note however the wiring will be different. FOR THE ENERCON CONTROLLER, DO NOT BREAK OR JUMPER ANY COMMON WIRES FOR RAIN SWITCH INSTALLATION. The Enercon has two dedicated input terminals marked "RS" on the output board. You must use the N.C. connections from the rain switch. The rain switch must also be activated through the HELP/INFO function (See HELP/INFO function sub menu -- Rain Switch Enable).

Solenoids:

The Enercon only operates DC LATCHING type solenoids. DO NOT CONNECT AC OR NON-LATCHING DC SOLENOIDS TO THE CONTROLLER. Alex-Tronix highly recommends using the Alex-Tronix "LS" Latching solenoid. If using the LS, fasten to valve using procedures stipulated by the "Valve Compatibility Chart" provided by Alex-Tronix.

All latching solenoids have a *polarity*. Typically, black wires are all connected to the common "C" terminal. The remaining red wires are connected to stations "1 through 24." If there are doubts about the polarity, a solenoid can be directly connected at the Enercon's output board terminal strip and tested in **MANUAL**. Correct operation is: On "latch"-- the plunger will pull in; on "release"--plunger will pop out.

When connecting field wires to solenoid wires, make sure the connection is GOOD, CLEAN and TIGHT. Use **gel filled wire nuts only**. Mark the field wires at the solenoid to denote polarity. If junction boxes are used in the field, make sure that the wires are not "crossed". Correct polarity must be observed, otherwise the solenoid will not operate properly and the valve will operate opposite of what is expected. - It will open, when it should be closed.

Note: If you have an application requiring a normally closed valve, such as a master valve to remain closed when there is no irrigation, *you can wire the latching solenoid in reverse*. The valve should be marked so as to not confuse anyone for future servicing.

OUTPUT TERMINAL BOARD:

Output Modules:

The Enercon uses output driver modules for ease of expandability and service. Each module can drive 4 solenoids, starting from top to bottom order: **M**, Stations: **1-4, 5-8, 9-12, 13-16, 17-20, and 21-24**. To replace or add modules, open the lower door, remove battery pack cover and *one battery*, then pull module(s) straight out. When a module is removed, you will notice a color designation printed on the output board. All station modules are colored green and can be swapped for field trouble shooting purposes. A special module (master valve) with a yellow cover is at the very top. It must remain only in that position. Add new modules or replace by gently aligning connector and pressing straight in against button fastener. Replace battery and cover.

Temperature Sensor:

The Enercon Plus comes standard with a simple temperature probe. If you will be using the temperature budgeting feature, you will need to connect the probe to terminals marked TEMPERATURE PROBE located on the upper left of the output board. The probe end drops down to ground level into the conduit pipe where the field wires enter into the controller.

Operating Characteristics:

The Enercon is an energy efficient battery powered controller; if several valves are programmed to come on at the same time, they will actually activate sequentially, several seconds apart from one another. Activation times can be from 3-8 seconds depending on the condition of the batteries. Whenever a station or program is activated by MANUAL, SEMI-AUTO, AUTOMATIC, or TEST CYCLE, there is always at least a 3 second delay before any solenoid is activated. The solenoid activation order is as follows: station solenoid output comes on first, then master valve. When valves are to be turned off, the reverse order occurs with the master, and station solenoid shutting off, each 3-8 seconds apart.

If more than one program is scheduled to start at the *same time*, the first station assigned to program A will come on first, then the first station in Program B, then C, then D.

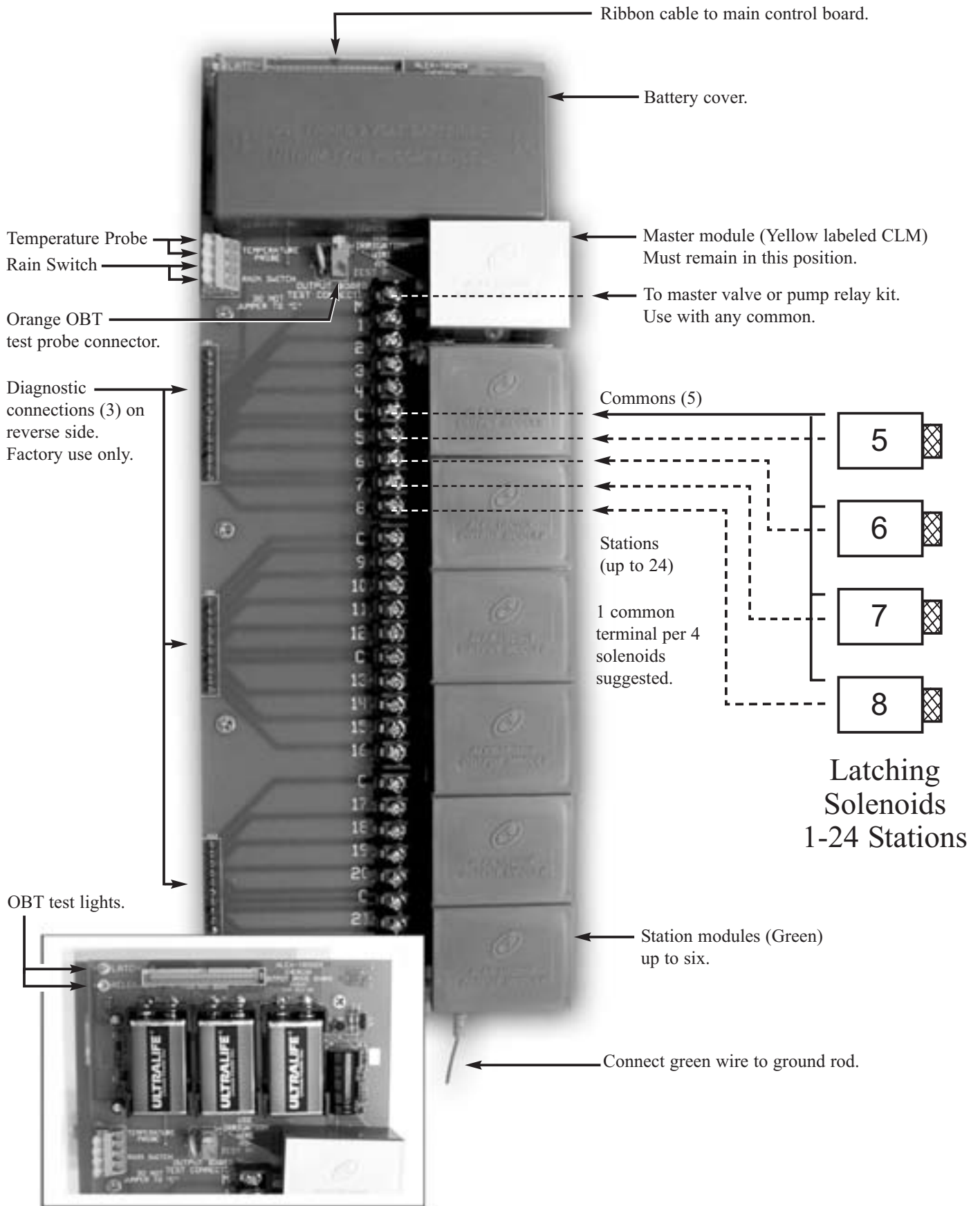
Master/Pump Connections:

When controlling a pump (or other auxiliary device), an optional pump interface kit (P.I.K.-S) available from Alex-Tronix, must be used. It is connected between a common "C" and master "M" output terminals. The relay can then "make" or "break" a circuit to control a pump or other device. For this option, contact factory for part availability and connection details.

Output Board Test (OBT) Terminal:

The small orange colored terminal located at the top of the output terminal board marked: "USE IRRIGATION WIRE AS TEST PROBE" is used to self-test the outputs of the Enercon using the **OUTPUT BOARD TEST (OBT)** function located under the **HELP/INFO** menu. (See **HELP/INFO -- OUTPUT BOARD TEST**).

FIGURE 4



Top of output terminal board showing 9 volt lithium batteries with battery cover removed.

ENERCON PANEL CONTROLS AND PROGRAMMING:

Programming capabilities:

- From 4 to 24 stations.
- 4 programs with four start times per program.
- Watering Days or Days Interval.
- Water Durations up to 23 hours and 59 minutes per stations.
- Up to four independent Automatic or Semi-Auto starts can be initiated and overlapped.
- Manual Starting of any station.
- Rain Delay & Station delay.
- Automatic Valve testing feature.
- Monthly, manual and temperature (Enercon Plus only) budgeting.
- Minimum Temperature auto-start shutdown.
- Help and configuration menu.

The Enercon uses hybrid keypad and rotary knob programming for ease of use. The keypad allows fast data entry, while the function selector knob gives the feel of user friendly mechanical controllers. The function knob is where all the program information is viewed and entered. *The keypad is used to input program data.* Any entry that can be selected or adjusted on the display has an asterisk symbol "*" next to it. Using the **SEL** key advances the cursor within the selected function. Let's proceed with each function. Please note that during programming, if you turn the rotary knob off of that position before pressing enter, the entered data will be lost. Let's proceed with each function.

To wake the display, hold any button down until display appears.

Run/Status:

This knob position displays what the controller is currently doing. If only the date and time are displayed, then the controller is idle, and waiting for the next start time. Change the time and date on this function as follows:

TIME OF DAY AND DATE: To enter, change, or correct time of day, press **SEL** on keypad. You will see a blinking cursor on the display where the time is located. Using the keypad, enter in the correct time of day and press the key marked **AM/PM**. Times that are less than 10 hours must have zero entered in before the next number...For example: 09:23AM.

Press **SEL** again. The cursor will now move to where the date is located. Enter the date in the following format: **MM/DD/YY**. After pressing **ENT**, the actual day displayed (**Su, Mo**, etc.) will set itself, because the Enercon has a built in calendar. The Enercon's calendar accounts for leap year but not daylight savings time. You must reprogram the correct time if your locale follows DST.

The **RUN/STATUS** display also provides additional information. When the Enercon is executing an automatic or semi-automatic program, you will see what program is running, which station is on, and the remaining watering time. The display may show up to 4 programs/stations running at the same time. Other information that could be displayed may be: **UNIT IN MANUAL, UNIT IN TEST, CHANGE BATTERIES, RAIN DROP ICON, CONTROLLER OFF, RAIN DELAY, STATION DELAY, CHECK TEMP SENSOR, TEMPERATURE BUDGET, MANUAL BUDGET, MONTHLY BUDGET**, and a % sign indicating duration times are budgeted.

When all programs have finished, the display will show the time, date, and day. It is not necessary for the function knob to be left on the **RUN/STATUS** position for normal operation.

NOTE: When any **BUDGETING** is active, the **RUN/STATUS** function will display the current temperature after 1 hour on the top left corner of the display, along with the budget method and daily calculated percentage on the second line.

Station Assignments:

For a station to operate a valve in Automatic, Semi-automatic, or Test mode, stations must be assigned to at least one program. To assign stations, press the **SEL** key. The cursor is now located on program **A**. If you continue to press **SEL**, the cursor will scroll through programs **B, C, D**, and back to **A** again. After selecting the program letter, press **ENT** to go into the station assignments display for the related program.

You are now in the station assignment area for the selected program. In the lower right hand corner, you will notice a cursor. This is where the station numbers are initially entered. For example, to assign station number 3, press 03.

To assign stations, key in the stations two numerical digits within succession up to 24. If you key in stations any higher than the controller is capable of, you will see ## (pound sign) in the lower right corner of the display. If the station entered is valid, the station will illuminate on the display at its designated location. You may continue to add additional stations as needed. When finished entering stations, press **ENT** to go back to the **SELECT PROGRAM** display. From this point you can either select another program to assign stations to, or go to another function. If **ENT** is not pressed after any function screen programming is completed, the display will hold the previous screen settings.

NOTE: If you cannot program stations any higher than expected, check the **OUTPUT BOARD STNS** configuration setting under the **HELP/INFO** menu which determines how many stations are available.

Watering Days:

When rotary knob is set to **WATERING DAYS**, you will have two choices; actual watering days or days interval on any program. If **WATERING DAYS** or **DAYS INTERVAL** are not programmed, the controller will not operate in automatic mode.

SETTING WATER DAYS: To set **WATER DAYS**, press the **SEL** key. You will notice the cursor flashing on program **A**, indicating the selected program. Press **SEL** repeatedly to advance to the other programs. Once you have selected the program, press the keys marked with the day names on them; **Sun, Mon, Tues**, etc. Pressing each one of these keys illuminates the watering days on the display. Pressing the same key removes that day. Once all the watering day selections have been made, press **ENT** on the keypad to enter in all the days on all programs.

SETTING DAYS INTERVAL: Days interval, also located under the **WATERING DAYS** function sets the number of days to skip watering. To set **DAYS INTERVAL**, press the **SEL** key. You will notice the cursor flashing on program **A**, displaying which program you are in. Press **SEL** repeatedly to advance to any the other program. Once you have selected the program, press the key marked: **DAYS INTVL**. When the days interval option is displayed, you can change the number of skipped days-- entered on the keypad from 1 to 99 days. When finished, press **ENT** to enter all four programs on the display. Watering begins with the same day the interval is programmed as long as the start time(s) have not yet occurred.

If you make any change to any of the four programs (A-D), the programs assigned to the interval of days will reset and a new starting day begins when you press enter.

Watering Durations:

To set watering duration for all stations, select any bank (1-8, 9-16, 17-24) by pressing **SEL**, then **ENT**. Once you are in the desired bank, Press **SEL**, then **SEL** again or **LEFT/RIGHT** (← →) arrows to navigate between stations. Once you select the desired station(s), key in the water time anywhere from 1 minute to 23 hours--59 minutes. After setting all the station watering durations, press **ENT** to enter in the complete display. The display will return to the bank selection menu where you can either select another bank or go to another function using the function selector knob. All watering durations must be set with 4 digits. For example, 15 minutes is entered as 0015 or one hour and 20 minutes would be 0120.

Budgeting information "%" is also shown in the center of the **WATERING DURATION** display. This is informational only, and displays calculated durations. Even when the durations are budgeted, you can change them "on the fly" without changing the budget back to 100%. To do this --while in **WATERING DURATIONS**, press **SEL** and the duration base times appear. Use **SEL** or **ARROWS** to move from --station to station, then key in the modified time. When you are finished, press **ENT** to lock in the durations. The display will revert back to the actual run times. Note that any newly modified durations will also be re-budgeted. These instructions are specific to software version 4.0 and up.

As budget settings are changed (manually or automatically), duration times change accordingly. For more on this, see Budgeting below.

NOTE: If you expect to advance to the next station and cannot, check the **OUTPUT BOARD STNS**. configuration under the **HELP/INFO** menu, and make sure it is set correctly.

Start Times (Automatic):

For automatic operation, at least one station with a watering duration, a watering day, a start time, and assigned to at least one program must be entered into the Enercon. If any of these parameters are missing, automatic starts will not occur.

The Enercon has four programs with four starts per program. A total of sixteen starts for each station are possible per day. To set start times for programs, select programs **A&B** or **C&D** by pressing **SEL**, then **ENT**. Now repeatedly press **SEL** to select (or right-left arrows) to select any program letter. Once you have selected a letter, use the keypad to enter in the start time, then press **AM/PM** for the time of day. Continue to enter in desired start times, then press **ENT** to enter the display and revert back to the **SELECT PROGRAM** menu. *If you do not want any start times--* Enter **0000**. 4 dashes (- - : - -) will appear indicating no start time is entered. All **START TIMES** are entered in as four digits. For example, a start at 8:30AM is entered as 0830, then press **AM/PM** button until **AM** appears.

Semi-Auto:

SEMI-AUTOMATIC - To use Semi-Automatic, at least one station within its program must be assigned under **STATION ASSIGNMENTS**, and have some **WATERING DURATIONS** programmed in as well. Semi-Automatic "starts" are all independent. To put the Enercon in the semi-automatic mode, press **SEL** to select any of four programs **A** through **D**. Now press **ENT** to start the selected program. Any running program will be shown on the display when the rotary knob is set to the **RUN/STATUS** position. All stations assigned to the selected program will turn on sequentially-- for one cycle only.

If a Semi-Auto program is currently running, you can not restart semi-auto again over the same program. A command to restart the same semi-auto program while it is already running will be canceled. You can however start other programs in Semi-Automatic.

If a Semi-Auto is started over a previously running automatic schedule of the *same program*, it will only cancel that program, and not affect any other programs concurrently running.

For example: if programs **A, B, C, & D** are currently running automatic schedules, and you activate Semi-Automatic program **A**, the Enercon will immediately cancel program **A**'s automatic schedule, and begin semi-automatic within program **A** only. Programs **B,C, & D** will remain unaffected and will continue with their automatic schedules. Up to four semi-auto programs can be activated at the same time.

Manual:

MANUAL START: Begin a manual start by pressing **SEL** to activate station entry. Key in the two digit station number (i.e. 04 for station 4), then press **SEL** to set running time in hours and minutes (i.e. 0012 for 12 minutes). Press **ENT** to begin manual start. To stop manual, press **ENT** again. Note that only one station at a time may be operated.

Rain & Station Delay Times:

RAIN DELAY: Press **SEL** to select **RAIN DELAY**, then press **ENT**. Now press **SEL** and key in the two digit number of days you wish the Enercon to delay automatic water scheduling then **ENT** to initiate the rain delay. At midnight of each day, the rain delay count is subtracted by one day. When the count reaches zero, automatic cycling resumes. The *current day* is considered the first day for rain delay. When in "Rain Delay" -- Automatic, Semi-Automatic, and Test are inoperable, except for **MANUAL** start.

STATION DELAY: Station delay sets the "dead" time in between valves used to help valves close and open without loosing main water line pressure. To set **STATION DELAY**, press **SEL** twice to select **STATION DELAY** then **ENT**. Now press **SEL** and key in the number of seconds (up to 99) you wish the Enercon to delay valve actuation, then press **ENT** to enter.

Stations Test:

STATIONS TEST: The stations test sequentially runs through all assigned stations, on all programs, for a set amount of time. You can use this feature to maintain the irrigation system by observing valve operation while away from the Enercon controller. To use **STATIONS TEST**: press **SEL** and then **ENT**, then **SEL** again and enter in how long each valve will stay on --up to 99 minutes. Now press **ENT**. The first assigned valve in order will start, and the Enercon will remember this setting so that you will not have to enter it in every time you want to run the **STATIONS TEST**.

If the bottom line on the display states: "[NO STATIONS ASSIGNED]" then you must program at least one station in the **STATION ASSIGNMENT** function setting.

Budgeting:

The Enercon has three water budgeting methods. The first is **MANUAL BUDGET**, and the second, **MONTHLY BUDGET**. Manual budgeting allows you to change watering times for all stations by percentage for all programs at once. Monthly budgeting works similarly, except with the ability to budget on a per month basis. When a new month is encountered, the budget will automatically readjust itself to the new settings. **TEMPERATURE BUDGET** is the third type of budgeting available, and is a proprietary method developed by Alex-Tronix. Watering durations are automatically increased or decreased daily, based on tracking the temperature of your locale. The result is more efficient water savings over other budgeting methods.

Note: The **WATERING DURATIONS** display will indicate the current budget setting and whether it is in **MANUAL (MAN)**, **MONTHLY (MON)**, or **TEMPERATURE (TEMP)** budgeting.

MANUAL BUDGET: To set **MANUAL BUDGET**, press **SEL**, then **ENT**. Press the **SEL** key again and enter in the percent you wish to change the budget to, then press **ENT**. You can increase watering duration by passing 100%. You can reduce watering duration by setting the budget less than 100%. Budgeting is adjustable from 1-399%, in 1% increments. Use 3 digits to enter the percentage desired i.e. 030 for 30%.

Example: Say **MANUAL BUDGET** is set at 100% (by default) and water duration was originally set at 00:10 minutes. If you were to reprogram the **MANUAL BUDGET** to 200%, the duration would double and be recalculated at 00:20 minutes. If it were changed to 50%, the new watering duration would be 00:05 minutes. Budgets are calculated to the nearest minute, with a 1 minute minimum.

Baseline budgeting calculations are always assumed at the controllers default entry of **MANUAL BUDGET** at 100%. At least 1 station in **WATERING DURATIONS** must be entered before budgeting can be changed. Also note that **WATERING DURATIONS** cannot be changed when budget settings are other than **MANUAL** budget at 100%. If your baseline **WATERING DURATIONS** have been changed and you want to see what they originally were, you must set the budget back to **MANUAL** budget, and set to the default percentage of 100%.

MONTHLY BUDGET: To set **MONTHLY BUDGET**, press **SEL**, twice, then **ENT**. Press **SEL** again. On the keypad, use the **RIGHT/LEFT** Arrow (**SEL** can be used as **RIGHT ARROW**) to move the cursor around the display. Place the cursor on each of the months and key in the budget percentages as a 3 digit number-- i.e. 30% is 030. When complete, press **ENT** to accept all monthly budget percentages.

TEMPERATURE BUDGET: To set **TEMPERATURE BUDGET**, press **SEL** three times down and press **ENT**. You will see the temperature budget screen prompting for the zip code of the controllers locale. Key in your 5 digit zip code and press **ENT**. If zip code is found in the Enercon's database, the bottom two lines will display peak summer temperature, and latitude of your controllers location. If the zip code entered does not exist, "ZIP CODE NOT FOUND- PRESS **SELECT TO RE-ENTER**" will be displayed. Press **SEL** to try again. **OPTIONAL:** If the peak summer temperature, and latitude do not appear to be correct, these two parameters may be individually entered for better accuracy. Contact Alex-Tronix for to obtain the parameters, then press **SEL**, down to the **PEAK SUMMER TEMPERATURE**, and then **LATITUDE**; key in the parameters. It is important to note that when any of these two budgeting parameters are changed, an exclamation mark will

appear next to the modified parameter showing that it differs from the controller's own data base. Press **ENT** to complete calibration. The Enercon Plus is now ready to calculate water budgeting via temperature.

NOTE: While in the budgeting function, you can switch between budgeting modes anytime by pressing **SEL** to the mode, then **ENT**, pressing **SEL** again, then **ENT** again; the display then reverts back out to the main function display. You will notice which budget is active depending on where "(ON)" is next to. The remaining budgets that are not active retain their previous settings for future use.

Help/Info:

The HELP/INFO function provides information as well as the ability to adjust global configuration settings. Use **SEL** and ***NEXT** to scroll through information and functions. The following features are available from the **HELP/INFO** function:

- Alex-Tronix Technical Support Telephone number.
- The firmware version of your own Enercon controller.
- Valve Cycle Count -- The number of times the Enercon has activated any station or other outputs.
- Enabling rain switch.
- Clear program memory.
- Number of stations your Enercon controller supports.
- Output board test (OBT).
- Minimum auto-start temperature setting.

NOTE: The Enercon' upper main control board is used for all output board configurations, and can be configured to any number of stations as the output board allows by adding output modules. (up to 24--See options).

Rain Switch Enable:

If you are using a rain switch, you will need to activate this feature. Scroll down to **RAIN SWITCH=OFF**, and press **SEL** then **ENT** and **SEL** again to change the setting to yes (**Y**). You will see the display change from **OFF** to **ON**. The controller will now acknowledge any rain switch activity, and a rain drop icon will appear (switch opens) on the **RUN/STATUS** display when it rains. Only **MANUAL START** is available when the rain switch is active. Note that if the rain switch activates when the controller is in any other cycle, all valves will turn off.

Clear Memory:

WARNING: CLEAR MEMORY WILL ERASE ALL DATA IN THE CONTROLLER, except the output board configuration. You will need to reprogram controller completely.

Output Board STNS:

The Output Board Stations allow you to configure how many stations your controller will have if you are adding output modules for more stations. It is preset from the factory-- based on the number of output modules supplied with the controller. If you add additional modules (more stations), you will need to reconfigure it here. Unless you are adding stations modules, you should normally never have to change this setting.

Note: The Enercon is originally configured to a specific number of stations ordered -- up to 24. For example, if a 12 station unit was ordered, and you were in the WATERING DURATION function, all 24 station watering durations are displayed, but only the first 12 can be programmed. You also can not set watering duration past the configured number of stations. You also cannot assign more stations than allowed set by this function.

Output Board Test (OBT):

The Enercon has a unique self-test feature known as the OBT. This differs from **STATIONS TEST**. The OBT allows you to troubleshoot the output board for proper operation using the test probe. This test should be performed before systemic troubleshooting is done in order to eliminate the controller as the source of the problem.

CAUTION: REMOVE ALL COMMON "C" WIRES ONLY FROM TERMINALS BEFORE PROCEEDING!

TEST PROBE: Locate the small orange colored connector on the top left of the output board with the words underneath: **"USE IRRIGATION WIRE AS TEST PROBE"**. Cut a 2 foot piece of solid core irrigation wire, strip both ends 1/2", and insert one end into the small orange colored connector by prying the white colored terminal lift arm against the board with your thumb.

Now that the test probe is ready, Turn the FUNCTION SELECTOR knob to **HELP/INFO** and press **SEL** to ***NEXT** and keep going until you reach **"*OUTPUT BOARD TEST"**. Now press **ENT**. You will need to have the probe ready and touching the "M" station. When prompted on the display, press the right arrow key (>), and within 3-8 seconds the Enercon will pulse the "M" followed by the remaining stations in numeric order.

You will see the "green" L.E.D. light flash on latch followed by the "red" L.E.D. flash on Release. Follow through the rest of the station outputs making sure you move the probe to the next station immediately after it releases (within 3 seconds), otherwise you will miss the event. Once the test has been completed, the output board test will stop and re-prompt you if you want to run the test again.

TEST RESULTS: If every station pulses "green", then "red" (latch and release), the controller is working properly. If there are "green" flashes and no "red" flashes, or vice versa, the batteries or controller should be questioned.

MIN AUTO START TEMP (Enercon Plus Only):

NOTE: Use of the minimum auto start temperature feature requires the installation of the Alex-Tronix RTSP (Rain Temperature Sensor) or TSB (Temperature Sensor Bead). This feature inhibits automatic starts when the surrounding temperature around the RTSP falls below the entered set point. This feature can be used for freeze protection of lawn, plants and piping when irrigation in severely cold temperatures. The RTSP is read on the hour; the controller then decides to irrigate or not, depending on what the set point temperature is. If the surrounding temperature is at or below the set point, the controller will not *automatically start*; however, note: **MANUAL**, **TEST**, and **SEMI-AUTO** are not affected by this feature.

To set the minimum auto start temperature, scroll down to the last display, then press **SEL**, and **ENT**. Press **SEL** and select over to "Y". The display drops down to the numerical entry. The default setting is **OFF**. Key in the temperature at the point you would like the controller to stop irrigating. Press **ENT** to accept the set point and revert to ***NEXT**. The third line displays what the days high temperature was within the last 24 hours.

On the **RUN/STATUS** display, when minimum auto start is enabled, you will additionally notice the ambient temperature being displayed. When the ambient temperature falls to the set point where all automatic starts are disabled, a thermometer icon will also appear. When the ambient temperature rises above the set point, the thermometer icon will disappear, and automatic starts will resume. Note that any cycle(s) already in progress will be allowed to finish its schedule.

Controller On/Off:

To turn controller **ON** or **OFF**, press **SEL** to toggle between the two, then press **ENT**. "CONTROLLER IS OFF" will now be displayed, and is also indicated on the **RUN/STATUS** display. To turn the controller back on, press **SEL** twice again and **ENT**. On turn off only, the Enercon will immediately initiate a solenoid release routine that will turn off any valves that are currently on. When the controller is in the **OFF** mode, pressing any button to "wake up the display" does not "Turn on" the controller. You must go to the **CONTROLLER ON/OFF** function to turn the controller back on. When controller is off, all functions are disabled.

GENERAL TROUBLESHOOTING:

Q1) Is this a new system? If no move on to Q2; if yes then:

- a) **Are you using the BCS-SOL's?** This is an electronic module connected to our latching solenoid (LS). **YOU SHOULD NOT BE...**BCS-SOL's are only used for the BCS system. For all Enercon controllers, only *latching* type solenoids are used. Also do not use AC solenoids.
- b) **Have you checked for shorts or opens on the outputs?** Using a digital multimeter.. Do the following:
 - 1) Set your multimeter to "ohms" (omega symbol, or upside down horseshoe)
 - 2) With the field wires still connected to the terminal strip, put one probe on the common and the other on each station.
 - 3) Read the multimeter in ohms ... You should read a resistance from 8 to 25 ohms depending on the solenoid manufacturer. If you are using the Alex-tronix LS solenoid provided by us, the resistance will be approximately 9 ohms per solenoid, not counting wire resistance. With 14 gauge wire, add 2.5 OHMS per 1000' of wire.

If any or all stations read "open" (infinite resistance), then you either have the wrong common wire selected or the field wiring is broken somewhere. You'll need to trouble shoot your field wiring further in depth. You can also verify the controller and solenoid are working properly by removing the solenoid from the valve and wiring it directly on to the Enercon's output board. To do this, connect the black wire to a common and the red to any station. Operate it using the "Manual" function. If it operates there, there is a wiring problem.

- c) **Are any of the latching solenoids wired in reverse?** All black wires must go to "C" (common) on controller terminals. Remaining red wires connect to each individual "Station" terminals. If valves do opposite of what is expected, the solenoids are wired in reverse. Note that when turning on a station, the solenoid latches and the plunger "snaps" into the body of the solenoid; turning off a station allows the solenoid to release and the plunger pops out.
- d) **Does your valve require an adapter between the solenoid and valve?** Check the Alex-Tronix compatibility chart and see if you need an adapter or a extra O-ring to make our LS solenoid operate your valve. Adapters are readily available Alex-Tronix. Do not mistake a valve adapter for a BCS-SOL module used on a different system.
- e) **Is the RAIN SWITCH ENABLE on?** If you are not using a rain switch, the setting should be set to "OFF" under the "HELP/INFO" function menu. If you are using the rain switch, then the switch should be wired to the normally closed when dry (N.C.), and the setting should be set to "ON" under the HELP/INFO menu.

Q2) System has been operating fine, but now not working.

- a) **Are the batteries run down?** The Enercon has the ability to let you know when the batteries are low. If the batteries are low (each below 7 volts), you will see the warning on the **RUN/STATUS** display. Although the controller may continue to operate, all three 9 volt batteries should be replaced. If the display shows: "THIS PANEL NEEDS REPAIR", then the panel must be sent in for service due to internal batteries being depleted. When this happens, the controller will either be off or will be running its last cycle(s), and will not start again.
- b) **Main water line okay?** Check this by manually operating valve (at valve not controller). Loosening solenoid will achieve this. If main water pressured up okay-- Suspect valve.
- c) **All valves not working? or some?** If any wires are suspected broken, run test Q1-B. You can also trade station wires with each other to see if the valve in question begins to operate. If so, send in controller/output board for service.

Q3) The controller won't assign stations, durations, manual, etc. past a certain point.

- a) Check the **OUTPUT BOARD STNS=XX** under the HELP/INFO menu. Is it set correctly?
- b) Check to make sure your output board supports the number of stations you need as well.

Q4) The controller has a problem reading temperature (Enercon Plus only).

-
- a) If the display reads: **CHECK TEMPERATURE SENSOR** Check for an open wiring problem within the temperature wires of the RTS circuit.
 - b) If the controller reads 120F temperature and never changes or is obviously off from the ambient temperature, check for a short within the temperature wires of the RTS circuit.

Q5) **System worked fine, but now the solenoids latch but don't release.**

- a) Replace master module (Yellow)

MAIN PANEL REPLACEMENT:

For service or upgrades follow the instructions below:

- 1) Open top door of pedestal and remove single hex/slotted screw on the right side of the front panel. Set this screw on top of the pedestal.
- 2) Open bottom door of pedestal, and remove battery pack cover; remove one battery only.
- 3) Swing panel open, and observe gray colored ribbon connector plugged into the location marked- **TO OUTPUT BOARD**. Using your index finger and thumb slightly pull on one side of the connector, then the other end --back and forth until the connector is removed. DO NOT PULL ON RIBBON CABLE ITSELF! You may damage the harness and render the controller inoperable.
- 4) Remove the front panel by loosening the two hex/slotted screws on the left side (do not remove screws), and slide panel out.
- 5) Discharge your body from static electricity by placing your hand flat somewhere on pedestal chassis for a second or two.
- 6) Unpack the new panel from its static sensitive bag. **DO NOT TOUCH EXPOSED PINS WHERE CONNECTOR PLUGS IN**. Static from your body may damage unit.
- 7) Slide in the new panel between the screws and hinge and cinch down. Ensure the panel is aligned straight.
- 8) Match the key on the socket to the connector on the ribbon cable and firmly seat connector back into the socket.
- 9) Replace 9 volt battery and cover previously removed.
- 10) Controller should be reset by pressing the reset button sandwiched between the rear and face plate of the main panel on the actual circuit board. An arrow marking (ENERCON) on the read panel is where the reset button is located.
- 11) Finally, fasten down main panel with remaining screw and then test unit by running the OBT or MANUAL start. Replace bottom door on pedestal. Reprogram watering schedules.

BATTERY REPLACEMENT:

After a period of time, depending on the number of valve actuations, the display will remind you to replace 9V batteries. This will happen when the batteries have reached 7 volts or below. If you do not see this warning, then the batteries are healthy. The Enercon uses three 9 volt metal jacketed lithium batteries available from our factory. These batteries are extremely weather resistant. In an emergency, standard 9 volt alkaline or regular lithium batteries may be used which have a shorter life span.

BATTERY REPLACEMENT: Remove the lower door exposing the output board. There are three 9 volt lithium batteries located within the lower half of the pedestal. The batteries are located behind the battery compartment cover on the output board. Press in the clip on the left side of the cover and swing out to the right. Unsnap all three batteries and replace with new ones. Perform the opposite tasks to re-install batteries taking care to align the battery snaps. Initiate a MANUAL start to test and to reset the “Change Batteries” display indication.

VALVE COMPATIBILITY:

The Enercon can drive several types of latching solenoids; however for optimum performance, the Alex-Tronix LS is recommended. If using the LS solenoid, please review the valve compatibility chart enclosed to ensure compatibility.

Valve compatibility information is always changing-- If you do not see your valve on the chart, or have other questions, please contact our factory for further instruction. Please have the following information on hand before contacting our factory:

- Controller model number.
- Valve brand, model number, size, etc.
- Solenoid brand.

OPTIONAL FEATURES:

Lightning Suppressor Option -- Though the Enercon is isolated from AC power lines, helping to reduce the risk of power surges from lightning storms, an output board with lightning suppression gas tubes should be used in an areas susceptible to lightning. Contact factory for this option.

Rain & Temperature Sensor Kit -- With the Enercon, you have the option of using temperature based budgeting. When using this feature, you will need to order the Alex-Tronix RSP, RTSP or TSB rain/temperature sensors.

CARE AND MAINTENANCE:

The Enercon does not require in depth maintenance; however an annual check of following is good practice to ensure system reliability:

- Lubricating locks -- Open door, spray silicone lubricant annually. Do not spray into controller.
- Wire connections -- Check all connections on output board and solenoids.
- Stations Test -- Run STATIONS TEST to verify all valves are operating.
- Cleaning solvents -- Do not use caustic solutions on the Enercon pedestal chassis.
- Cleanliness -- Internally clean spider webs, insects, dirt, mineral deposits, rust, etc.

Warranty

Upon purchase, users of this product agree to the following terms, conditions and limitations of warranty and liability coverage:

Alex-Tronix warrants the Enercon including batteries to be free from original defects for two years from the date of original sale. The manufacturer shall replace, free of charge any part found defective under normal use and service within the guarantee period, provided the product is installed, used and maintained in accordance with any applicable instructions or limitations issued by Alex-Tronix.

Components supplied as replacement parts are warranted for 90 days from the date of shipment. The manufacturer assumes no liability for incidental or consequential damage sustained in the adoption or use of our engineering data, service or products.

Liability is therefore limited to the repair of the product manufactured by Alex-Tronix. No agent or representative has the authority to waive or add to this agreement.

Altered products, damage due to controller doors left open or unlocked, or use of products in a manner not intended shall void this warranty.

For warranty service, ship unit prepaid to the address below. Controllers damaged in transit due to improper packaging are not covered by warranty.

ALEX-TRONIX

A DIVISION OF GNA INDUSTRIES, INC.

4761 W. Jacquelyn Avenue • Fresno, CA, 93722
Telephone: 559-276-2888 Toll Free: 888-224-7630 Fax: 559-276-2890
controls@alex-tronix.com • www.alex-tronix.com
